

# Exercise Science/Sports Medicine



Career & Technical Education Class [www.graniteschools.org/cte](http://www.graniteschools.org/cte)

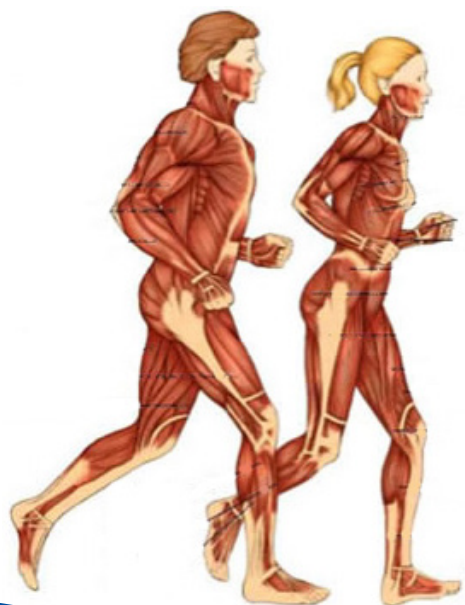


## Course Information

**Location:** Cottonwood, GTI, Hunter, Kearns, Olympus, Skyline, Taylorsville  
**Transportation:** School bus available to and from GTI  
**Offered to:** 11-12 grades  
**Registration:** GTI Application (Parent-signed)  
**Credits:** 1.0 CTE or Elective  
**Period:** Varies per school  
**Fees:** Class fees required  
College credit available (UVU and Weber State) at GTI

## Course Description

This course is designed to teach students components of Exercise Science/Sports Medicine including: detailed anatomy, injury evaluation, management, & rehabilitation. Health careers associated with Exercise Science/Sports Medicine, such as physical therapy & athletic training, will be explored. Students learn the elements of first aid & experience first-hand the prevention, evaluation, & treatment of injuries.



## Pathways

- \* Athletic Trainer
- \* Physical Therapy
- \* Occupational Therapy

Granite School District does not discriminate on the basis of race, color, sex, pregnancy, religion, national origin, marital status, disability, sexual orientation, gender identity, age, or any other legally protected classification in educational programs, activities, or access to facilities.

February 2022