



November 2, 2015

Martin W. Bates
Superintendent, Granite School District
2500 S. State Street
Salt Lake City, UT 84115

Dear Dr. Bates:

Over the past few years the Granite School District has reviewed the design and development of the Mountain View Corridor with UDOT. This future freeway system will affect the Hunter High School campus. UDOT has requested the following:

- The purchase 10,669 square feet of land (6003:C-Yellow) on 4100 South, just north of the baseball field.
- A perpetual easement of 4,035 square feet (6003:EU- Orange) just south of the land purchased.
- A temporary easement of 6,827 square feet (6003: E-Green) just south of the perpetual easement.
- A temporary easement for property located off 4100 South 5600 West (6003:3E-Green) for equipment parking during construction.
- A temporary easement between the soccer field and the softball field (6003:2E-Green) for a new driveway on the west side of the school. This driveway will connect to a West Valley City street, west of the high school.

UDOT will pay Granite School District \$320,100.00 for land, easements, and improvements. Also a new pump house for irrigation water will be paid for by UDOT.

A second item, related to the information listed above, UDOT is widening 4100 South which will require a modification to the entrance to Hunter High School on the north side of the campus (off 4100 South). UDOT has requested the following:

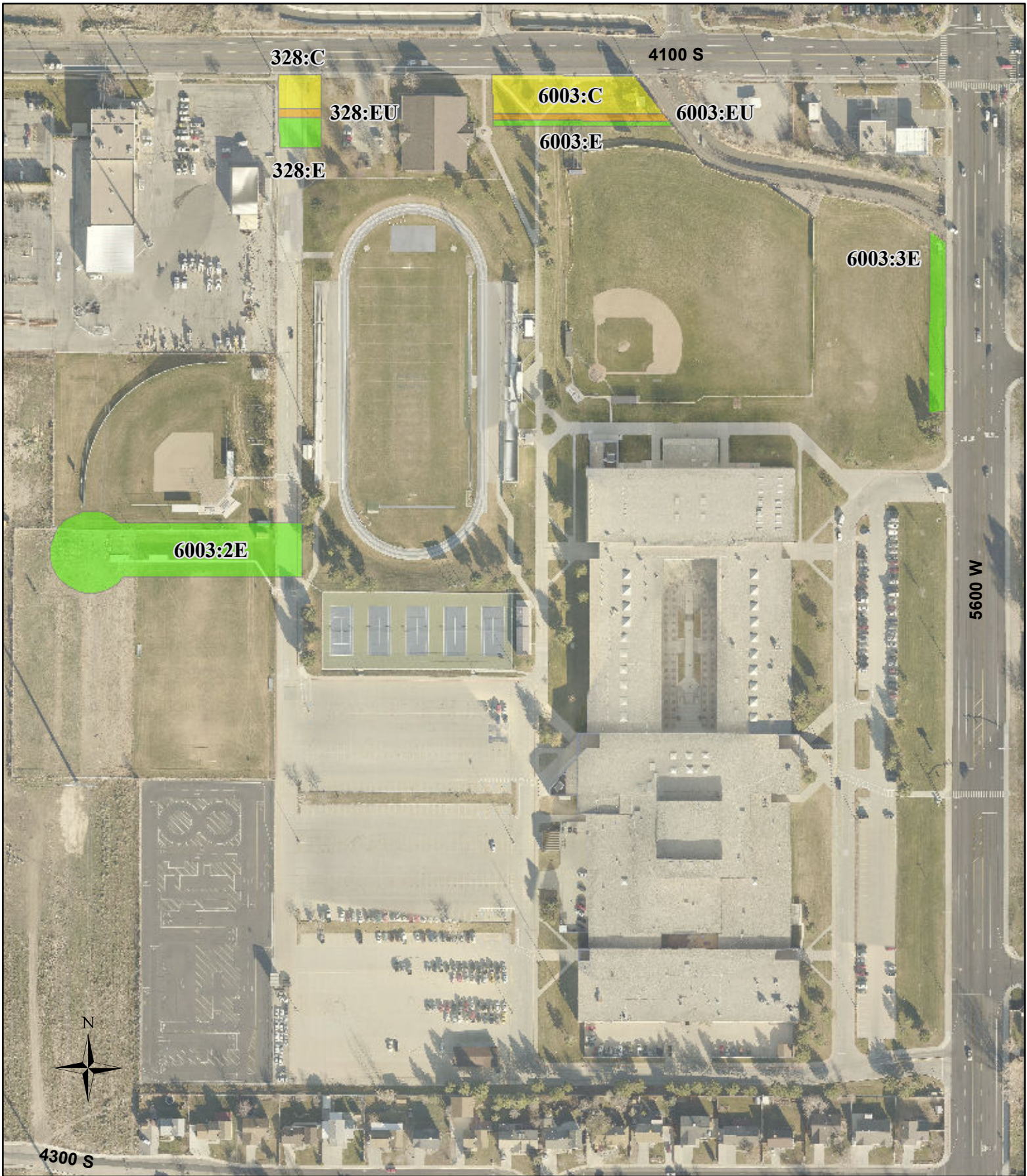
- The purchase of 2,801 square feet of land, which is the mouth of the current driveway off 4100 South (328:C-Yellow).
- A perpetual easement of 975 square feet (328:EU Orange) just south of the purchased land.
- A temporary easement of 4,189 square feet (328:E-Green) south of the perpetual easement.

UDOT will pay Granite School District \$71,000.00 for the land, easements and improvements.

The Granite School District Real Estate Committee recommends the approval of this transaction.

David F. Garrett
Business Administrator

Kieth C. Bradshaw
Director of Property & Safety



Hunter High School

UDOT Land Acquisition

Exhibit A

