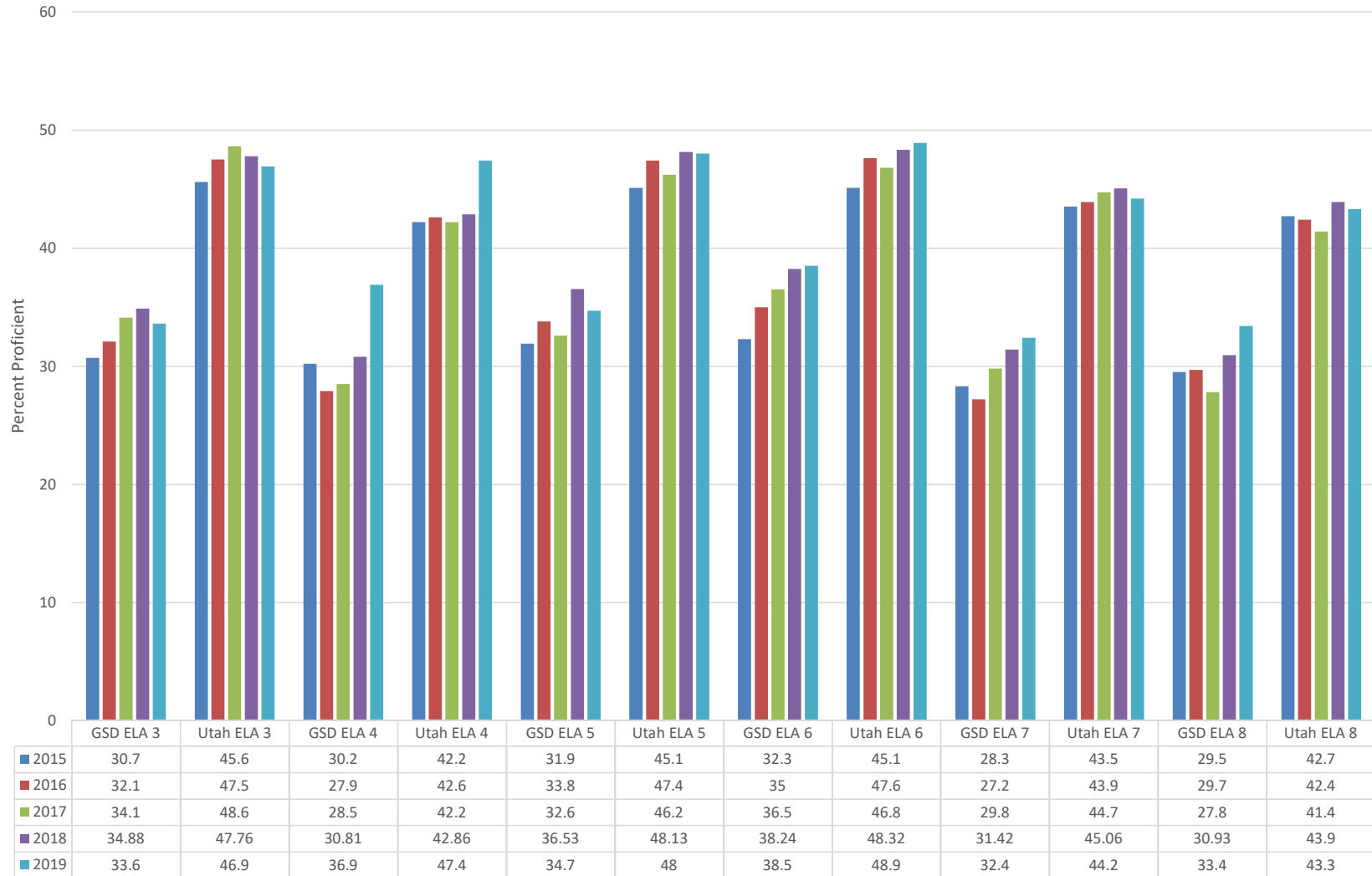




2019 Assessment Report

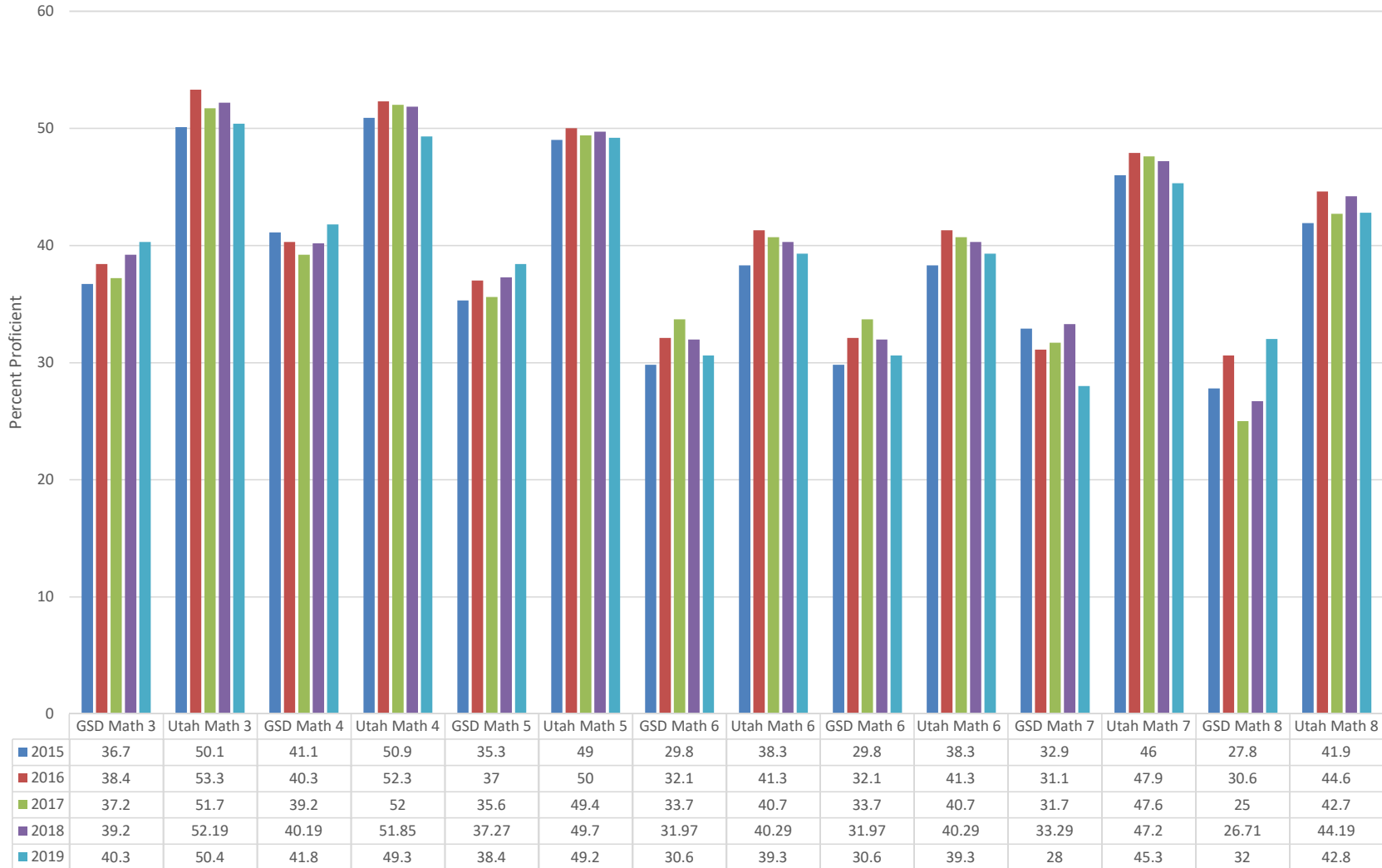
Rob Averett, DPA, Director, Student Assessment
Sara Grajeda, PhD, Research Analyst
Kaylea Drake, MS-Statistics, Research Analyst

Five Year SAGE-RISE Trends - ELA



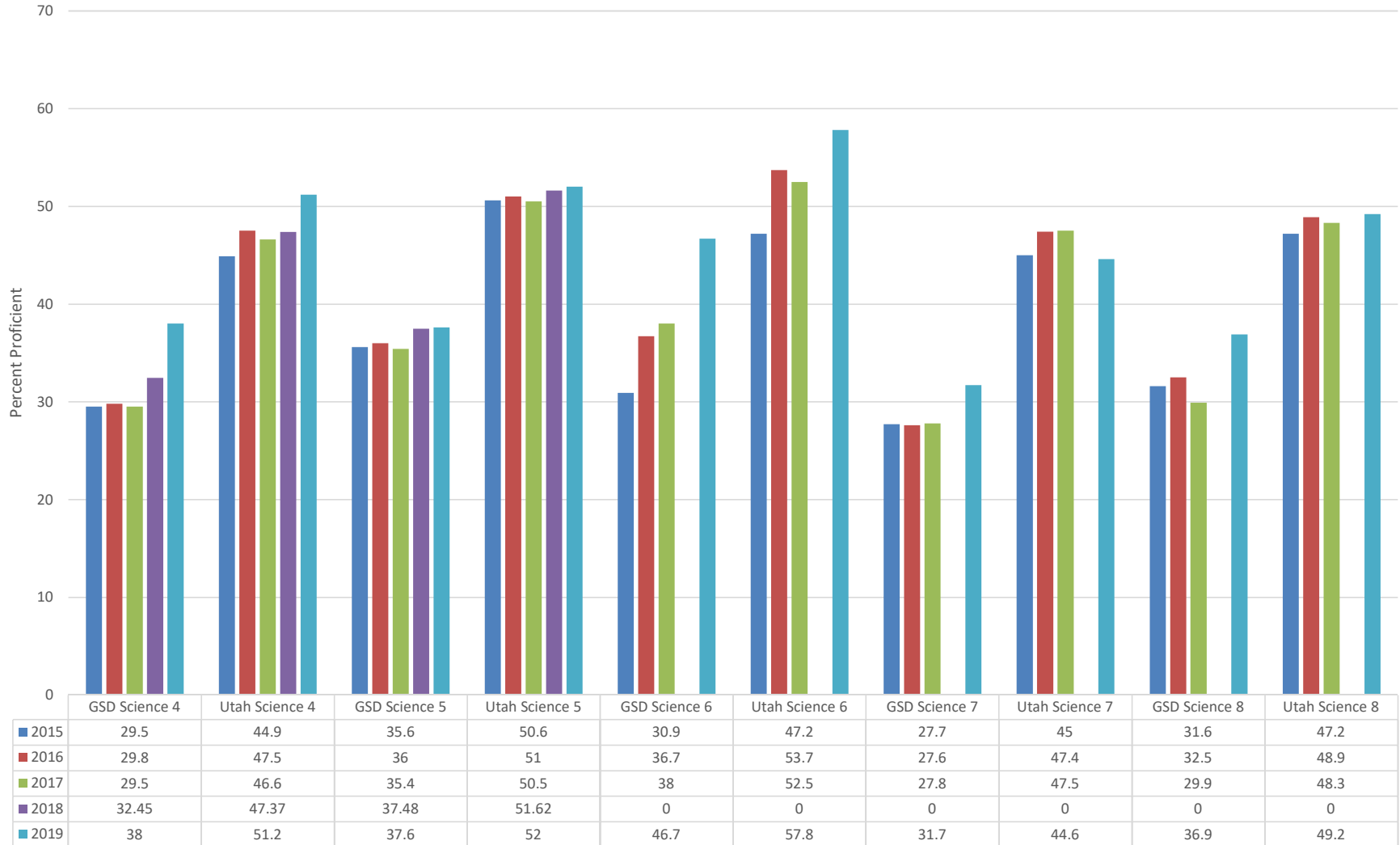
■ 2015 ■ 2016 ■ 2017 ■ 2018 ■ 2019

Five Year SAGE-RISE Trends - Mathematics



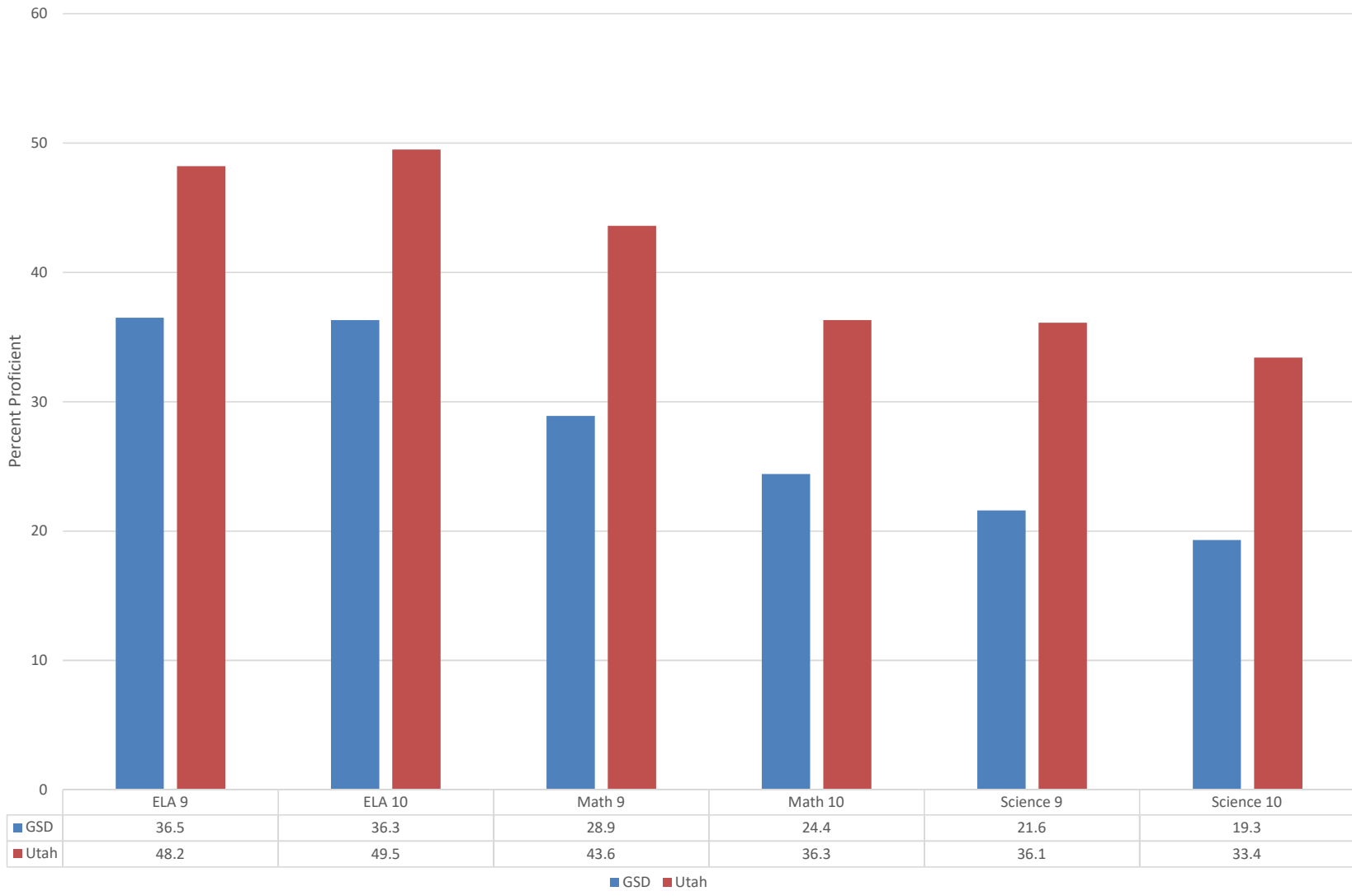
■ 2015
 ■ 2016
 ■ 2017
 ■ 2018
 ■ 2019

Five Year SAGE-RISE Trends - Science

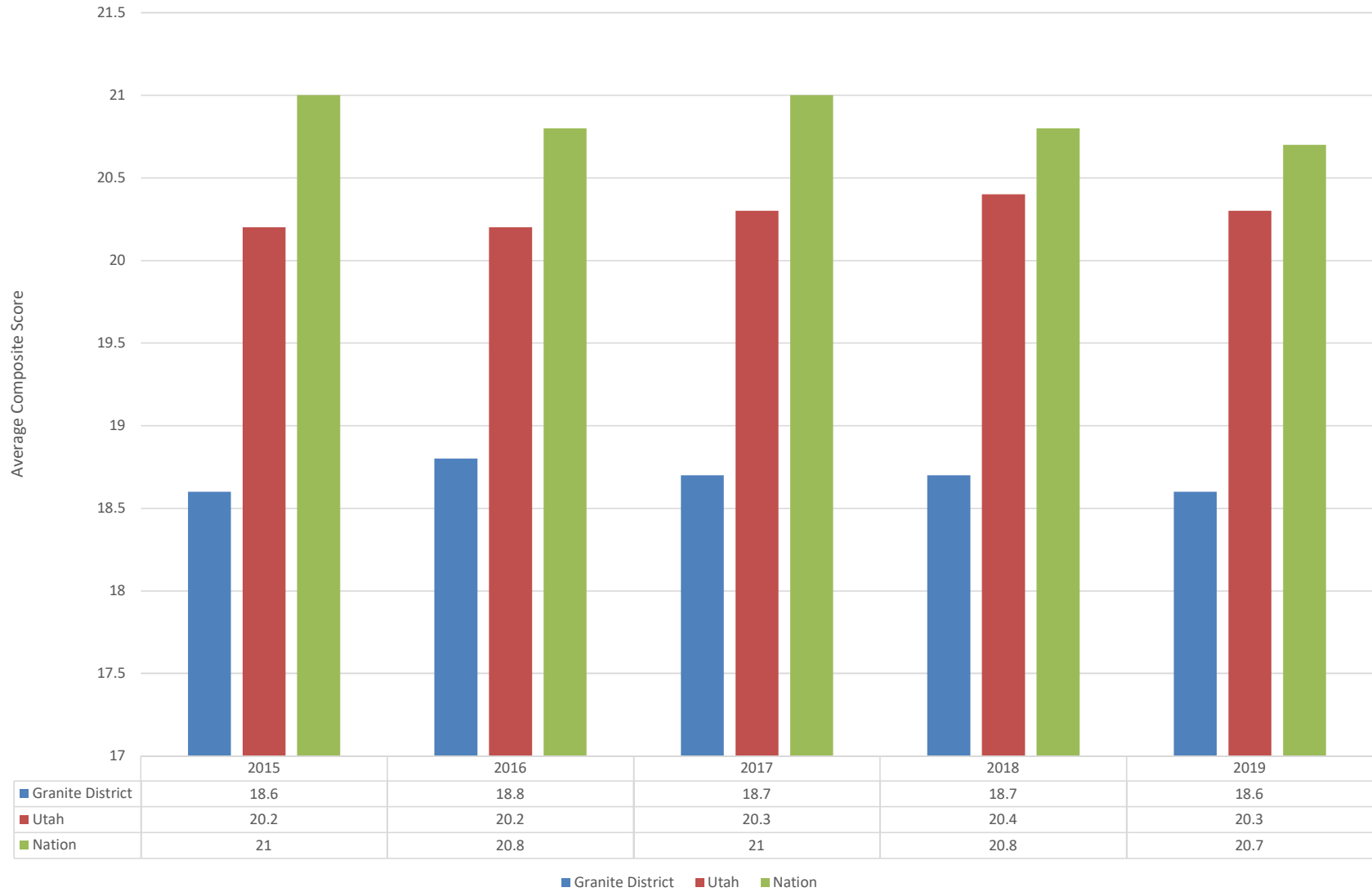


■ 2015 ■ 2016 ■ 2017 ■ 2018 ■ 2019

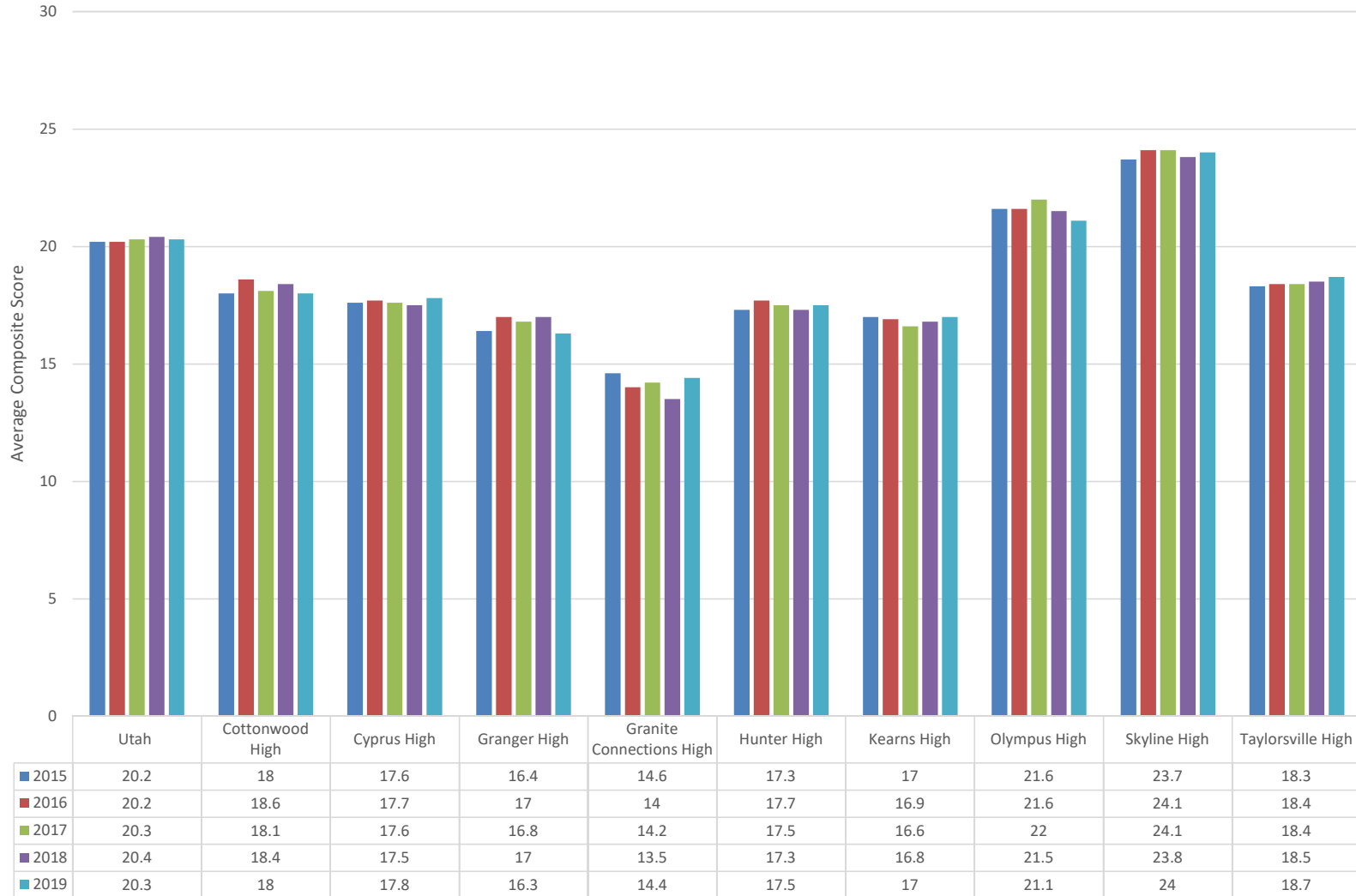
2019 (only) Utah Aspire Plus (UA+) Comparison GSD to Utah



Five Year ACT Trends - Average Composite Scores - District to State and Nation

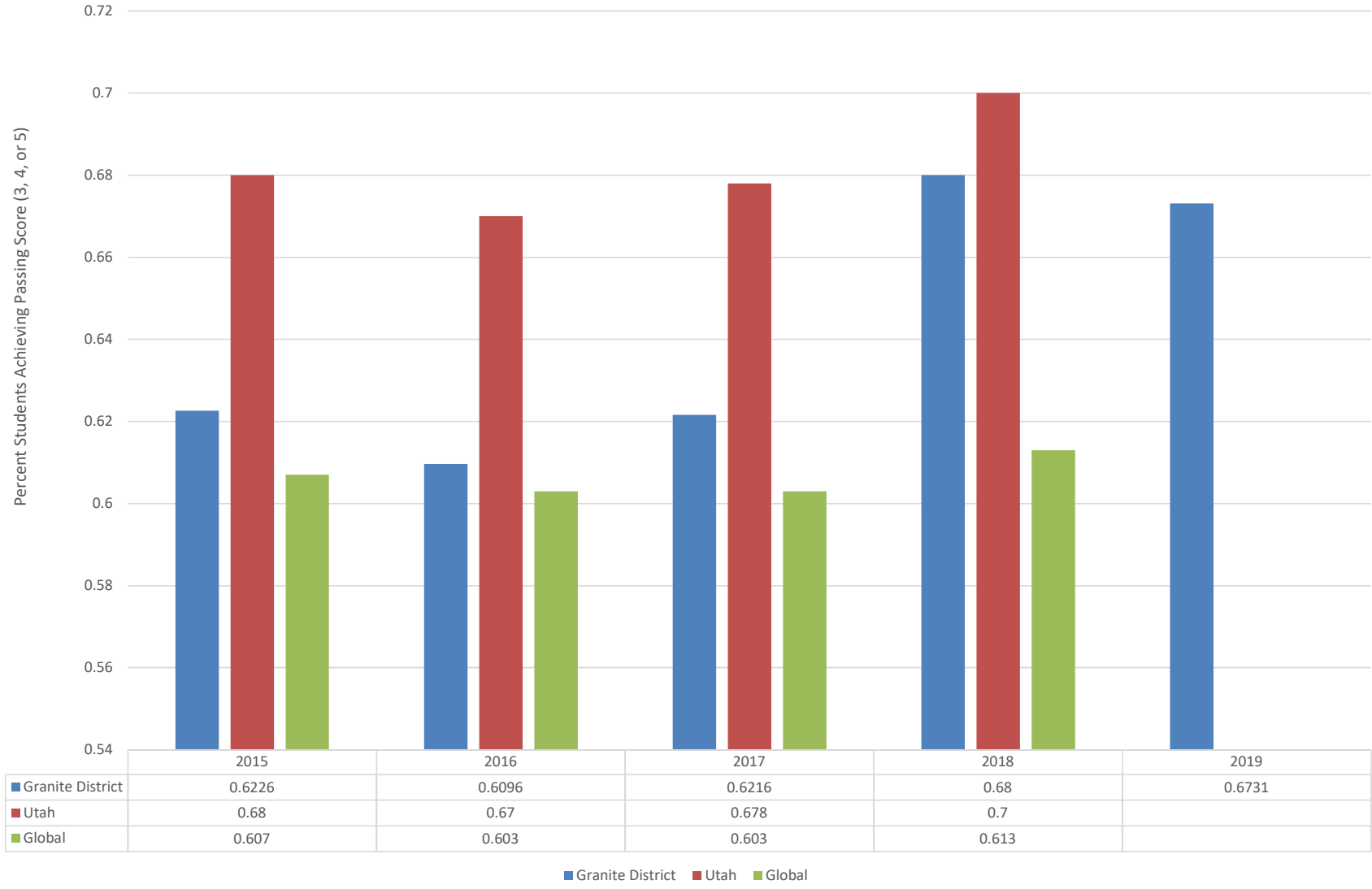


Five Year ACT Trends - Average Composite Scores by School

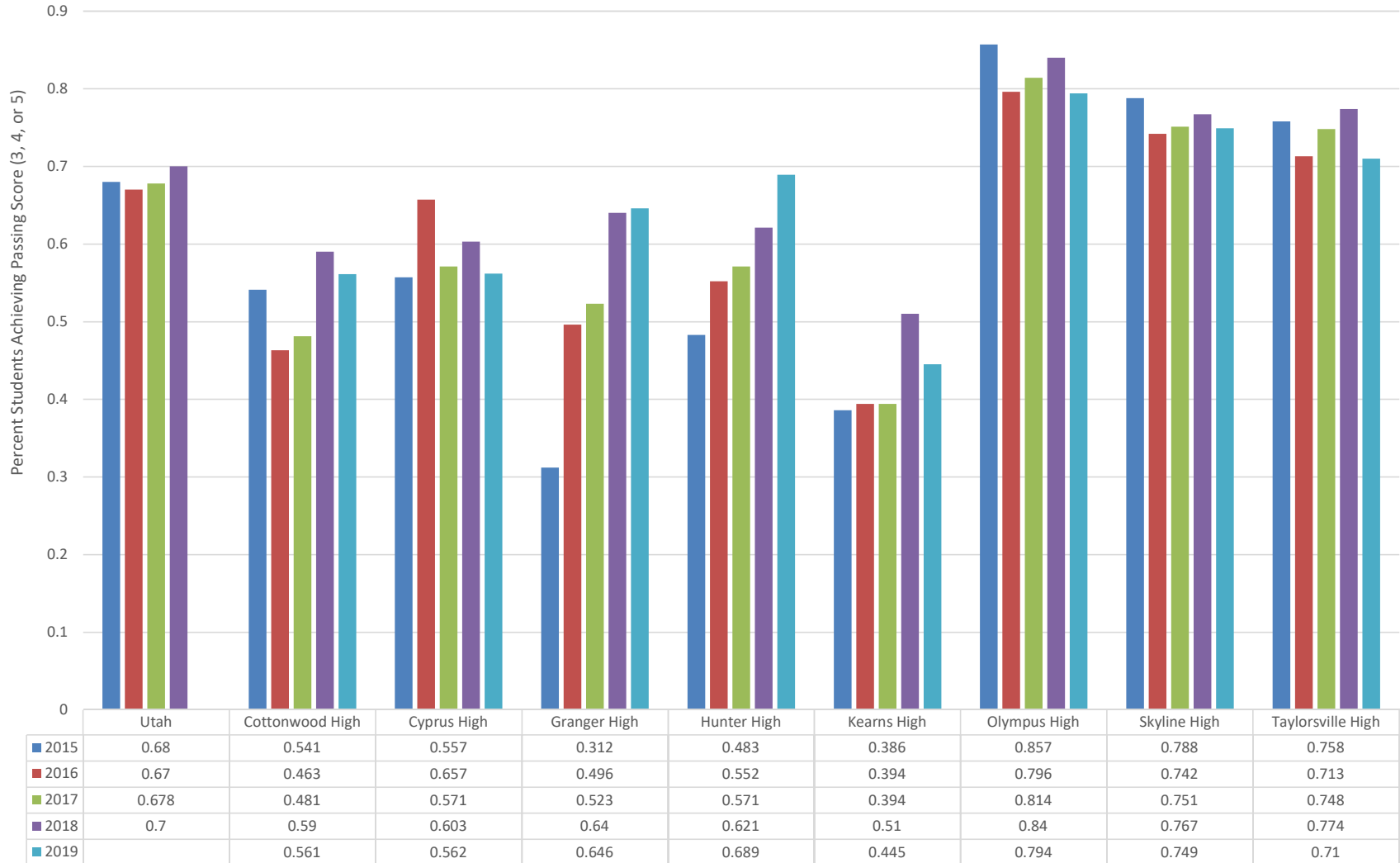


■ 2015
 ■ 2016
 ■ 2017
 ■ 2018
 ■ 2019

Five Year AP Trends - Average Composite Scores - District to State and Global



Five Year AP Trends - Percent Passing Scores Comparing Schools



■ 2015
 ■ 2016
 ■ 2017
 ■ 2018
 ■ 2019

Research Team Collaborations



MGP • SGP



SuccessMaker®





2016-2017 Usage

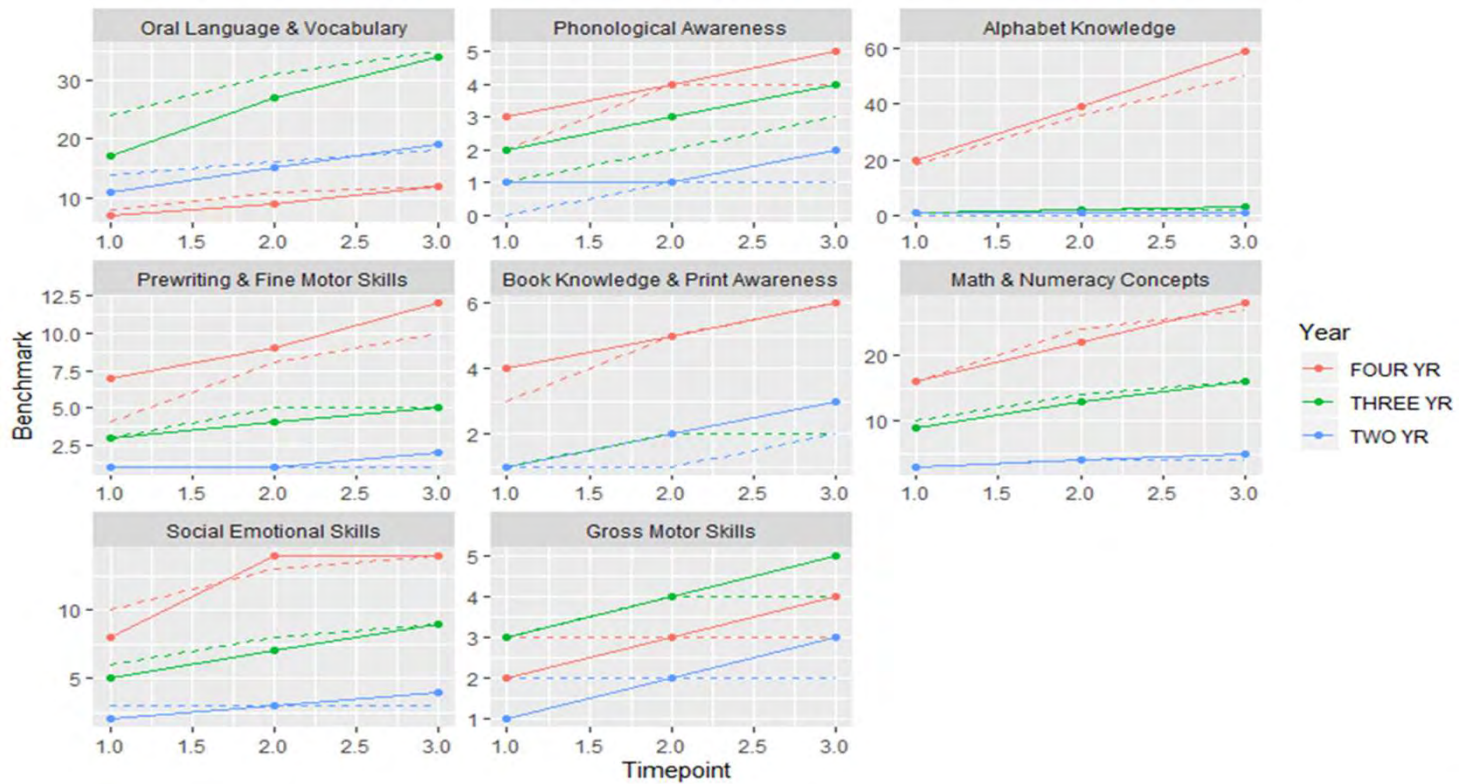
School	Students
Stansbury Elementary	913
Monroe Elementary	704
Woodrow Wilson Elementary	632
Redwood Elementary	605
Granger Elementary	571
Western Hills Elementary	366
Lincoln Elementary	335
Rolling Meadows Elementary	193
Pioneer Elementary	182
Oquirrh Hills Elementary	19
Gourley Elementary	13
West Lake Jr. High	7
Moss Elementary	6
Roosevelt Elementary	3
Hillsdale Elementary	2

2018-2019 Usage

School	Students
Stansbury Elementary	884
Woodrow Wilson Elementary	695
Granger Elementary	567
Monroe Elementary	561
Jackling Elementary School	392
Western Hills Elementary	375
Redwood Elementary	311
Oquirrh Hills Elementary	61
Pioneer Elementary	25
Rolling Meadows Elementary	13



Updating Proficiency Levels





Student Growth Percentile (SGP)

ELA SGP Comparison of New Calculations

