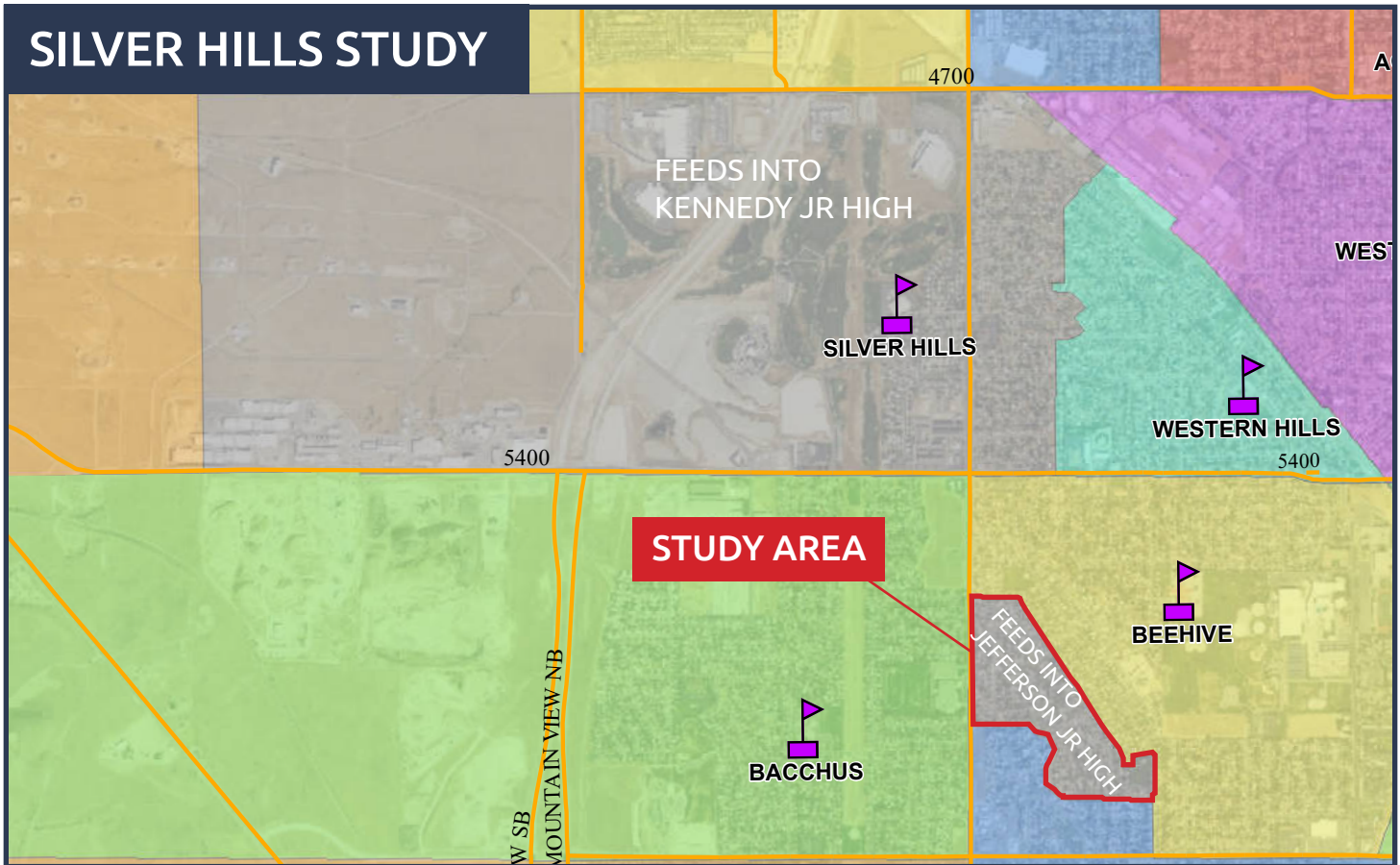


SILVER HILLS STUDY



SYNOPSIS

- There is an exclave of the Silver Hills Elementary boundary encompassing a portion of the neighborhood east of 5600 West near Beehive Elementary.
- The majority of Silver Hills students - those within the boundary section between 4700 South and 5400 South - feed into Kennedy Junior High School and Hunter High School.
- Silver Hills students who reside in the exclave feed into Jefferson Junior High and Kearns High School.
- There are 56 students in the exclave who attend Silver Hills Elementary, 10 of whom are 6th graders. The total Silver Hills enrollment is 390 students.
- Enrollment of nearby schools: Beehive (560), Bacchus (418), Jim Bridger (481), Diamond Ridge (763), Western Hills (340)

IMPETUS FOR A POPULATION ANALYSIS STUDY

Both Kennedy Junior High and the Kearns Network have been exploring K-5, 6-8 grade reconfiguration during the past year. Kennedy Junior High looks to be on track to present a formal request for grade reconfiguration to the Board of Education in the coming months. The Kearns Network, however, appears to have a split when it comes to K-5, 6-8 grade reconfiguration. Kearns Junior High is on similar track to Kennedy, and we anticipate their formal request for grade reconfiguration in the near future. Jefferson Junior High, on the other hand, appears disinclined to pursue grade configuration at this time.

Although Kearns Junior High and Kennedy Junior High are allowed to pursue grade reconfiguration independent of Jefferson Junior High, the situation presents a challenge for the split feeder of Silver Hills Elementary. If, as we predict, Kennedy Junior High submits a formal request for grade reconfiguration to be implemented in the 2021-2022 school year, the students in the Silver Hills exclave are in a quandary.

This study will explore solutions for the Silver Hills exclave in the likely scenario of Kennedy Junior High becoming a 6-8 school and Jefferson Junior High remaining a 7-8 school.