



Report from Davis Demographics

Forecast Calculations

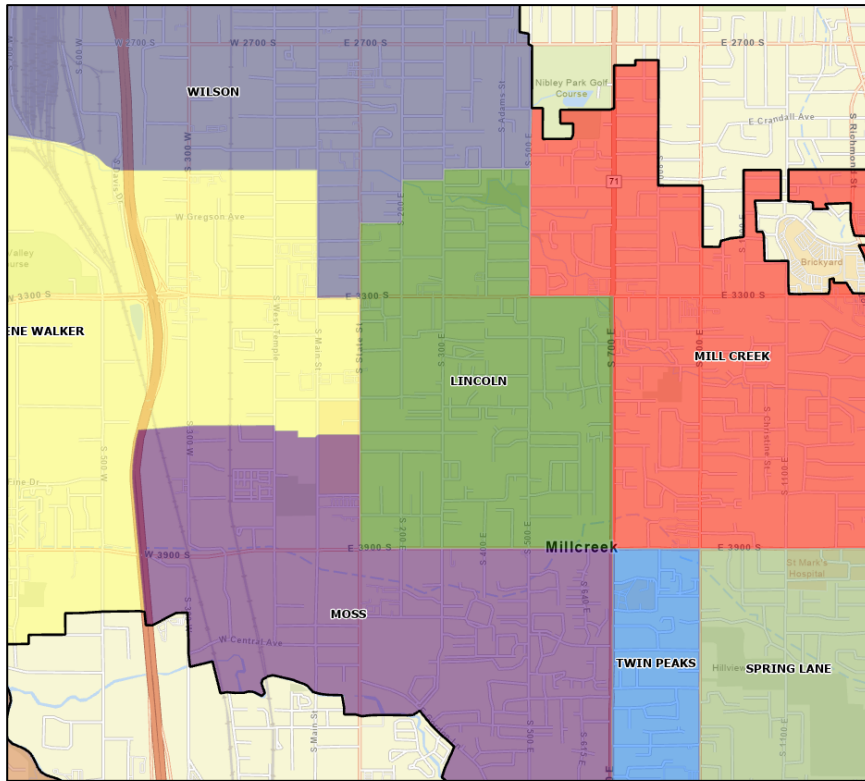
Forecast

- Calculated for each of the district's 1,109 Study Areas
- Based upon student data October 2019/20 and historical student data (2016-2018)
- Based upon student residence rather than current school of enrollment
- Graduate 12th grade; Move up other grades

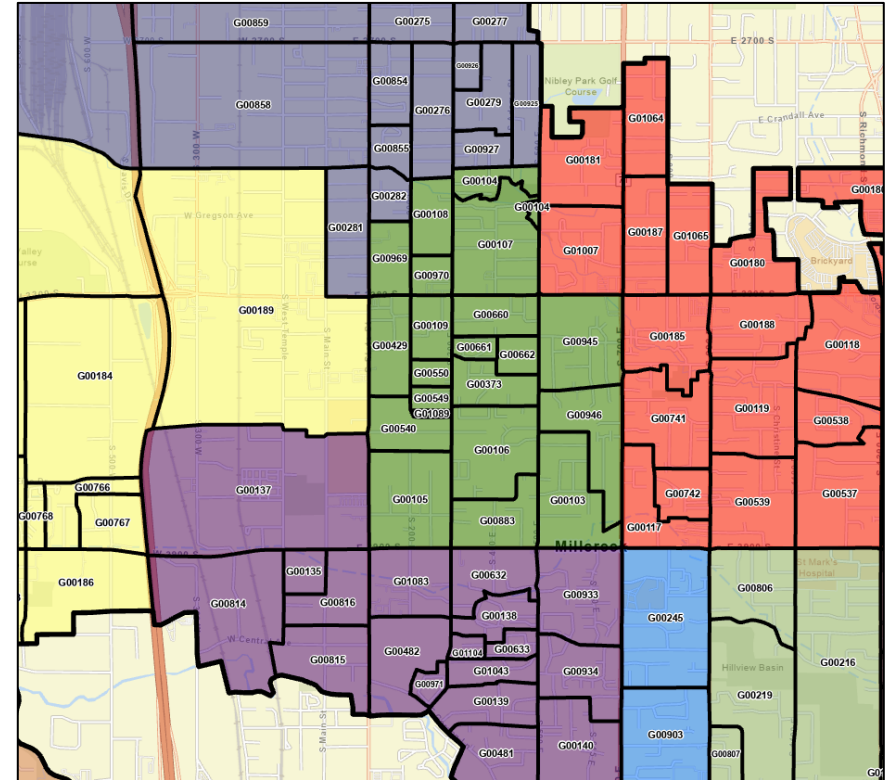
Factors Influencing Future Student Population

- Future Kindergarten Enrollment / Birth Rates
 - Future K enrollment is based upon ratio of current K enrollment and area births
- New Housing
 - Residential development researched and included in the report
 - Future students calculated based upon occupancy and a student yield factor
- Families Moving In or Out of the District (mobility)
 - Tracks students moving in and out of district by grade
 - Three-year average of student migration pattern
 - Applied district wide
 - Biggest influence on forecast

Example of Study Areas

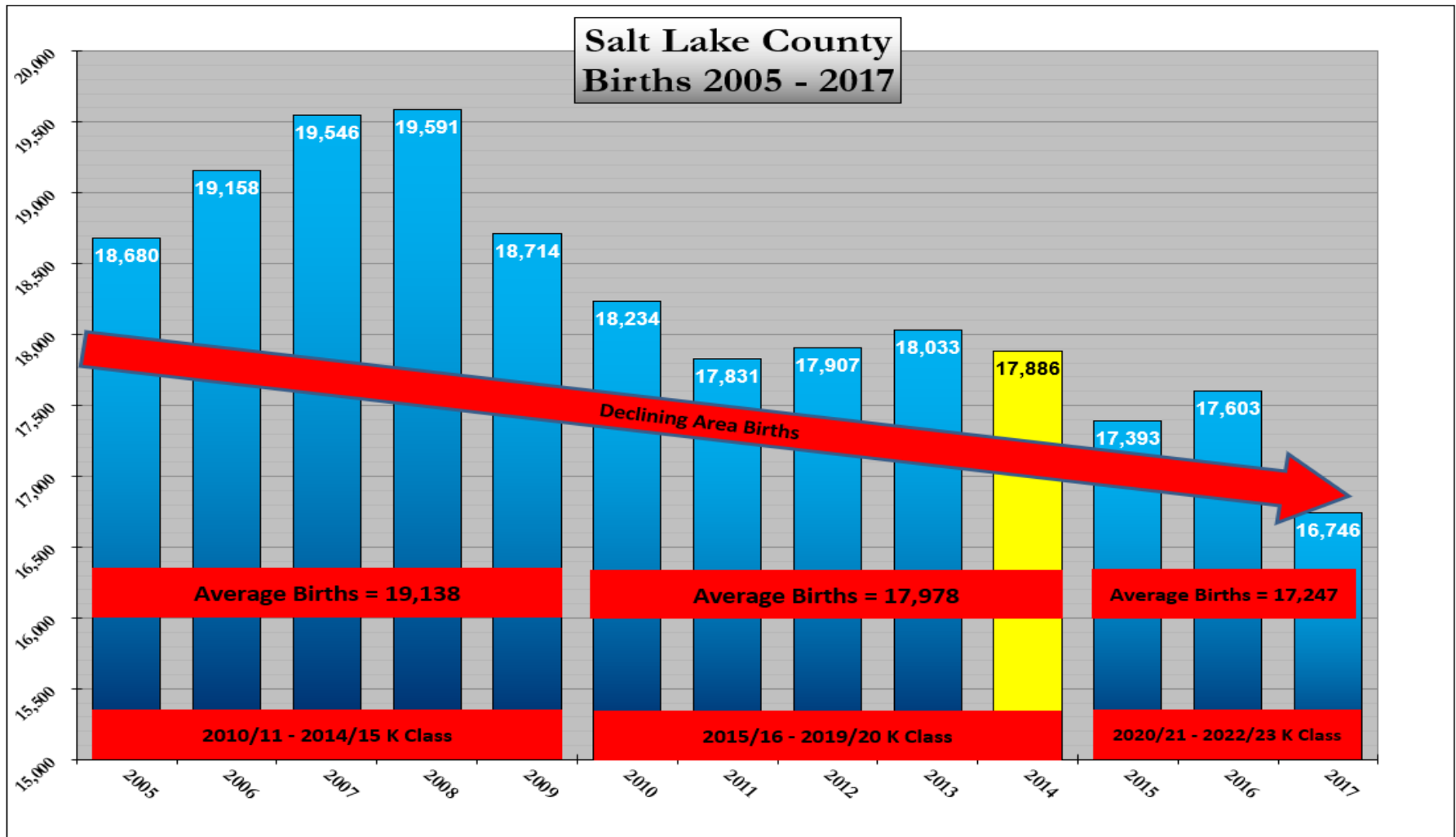


Attendance Areas



Study Areas

Future Resident Kindergarten



Comparing 2005-09, 2010-14 and 2015-17

Families Moving In or Out of the District (mobility)

Mobility is used to estimate future student retention patterns

- Tracks students moving in and out of district by grade
- Three-year average of student migration pattern
- Applied district wide
- Biggest influence on forecast

Areas with a mobility above 100% are experiencing a positive retention pattern

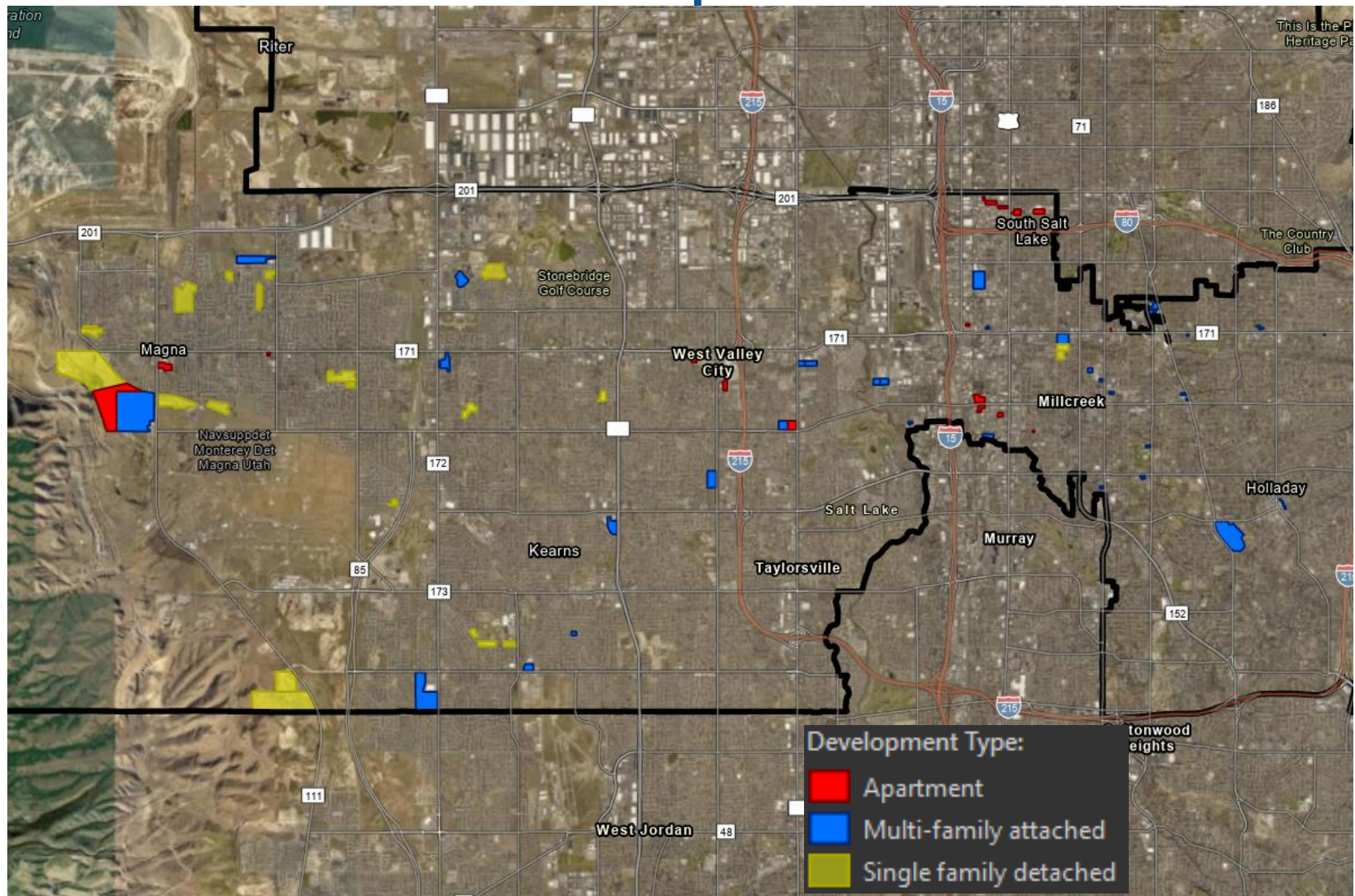
School Year 2016/2017 to 2019/2020 Mobility												
Attendance Area	K --> G1	G1 --> G2	G2 --> G3	G3 --> G4	G4 --> G5	G5 --> G6	G6 --> G7	G7 --> G8	G8 --> G9	G9 --> G10	G10 --> G11	G11 --> G12
Academy Park	107%	88%	106%	82%	104%	94%	108%	85%	103%	94%	92%	86%
Arcadia	102%	99%	96%	102%	86%	95%	103%	95%	97%	95%	93%	89%
Armstrong	117%	118%	81%	106%	100%	100%	81%	94%	115%	99%	105%	88%
Bacchus	97%	101%	108%	101%	101%	85%	109%	86%	115%	85%	102%	88%
Beehive	105%	113%	86%	100%	103%	103%	93%	100%	100%	92%	102%	91%
Bennion	108%	98%	100%	113%	93%	103%	111%	88%	102%	89%	98%	86%
Bridger	99%	89%	110%	88%	110%	95%	94%	91%	83%	116%	82%	102%
Copper Hills	102%	110%	92%	94%	115%	95%	101%	99%	94%	102%	91%	83%
Cottonwood	114%	101%	99%	105%	106%	100%	111%	102%	91%	103%	110%	92%
Crestview	105%	104%	98%	95%	106%	92%	104%	100%	100%	90%	104%	90%
Diamond Ridge	97%	97%	98%	93%	109%	82%	89%	83%	98%	97%	88%	90%
Driggs	102%	105%	113%	106%	90%	108%	112%	97%	111%	94%	93%	101%
Eastwood	110%	103%	90%	117%	99%	107%	114%	107%	108%	107%	85%	111%
Elk Run	113%	94%	98%	105%	88%	92%	106%	90%	101%	94%	84%	97%
Farnsworth	96%	99%	93%	96%	104%	98%	78%	111%	95%	95%	101%	85%

Mobility

Note: Increase from Grade 8 to Grade 9 is typically due to students entering GSD from private and/or charter schools.

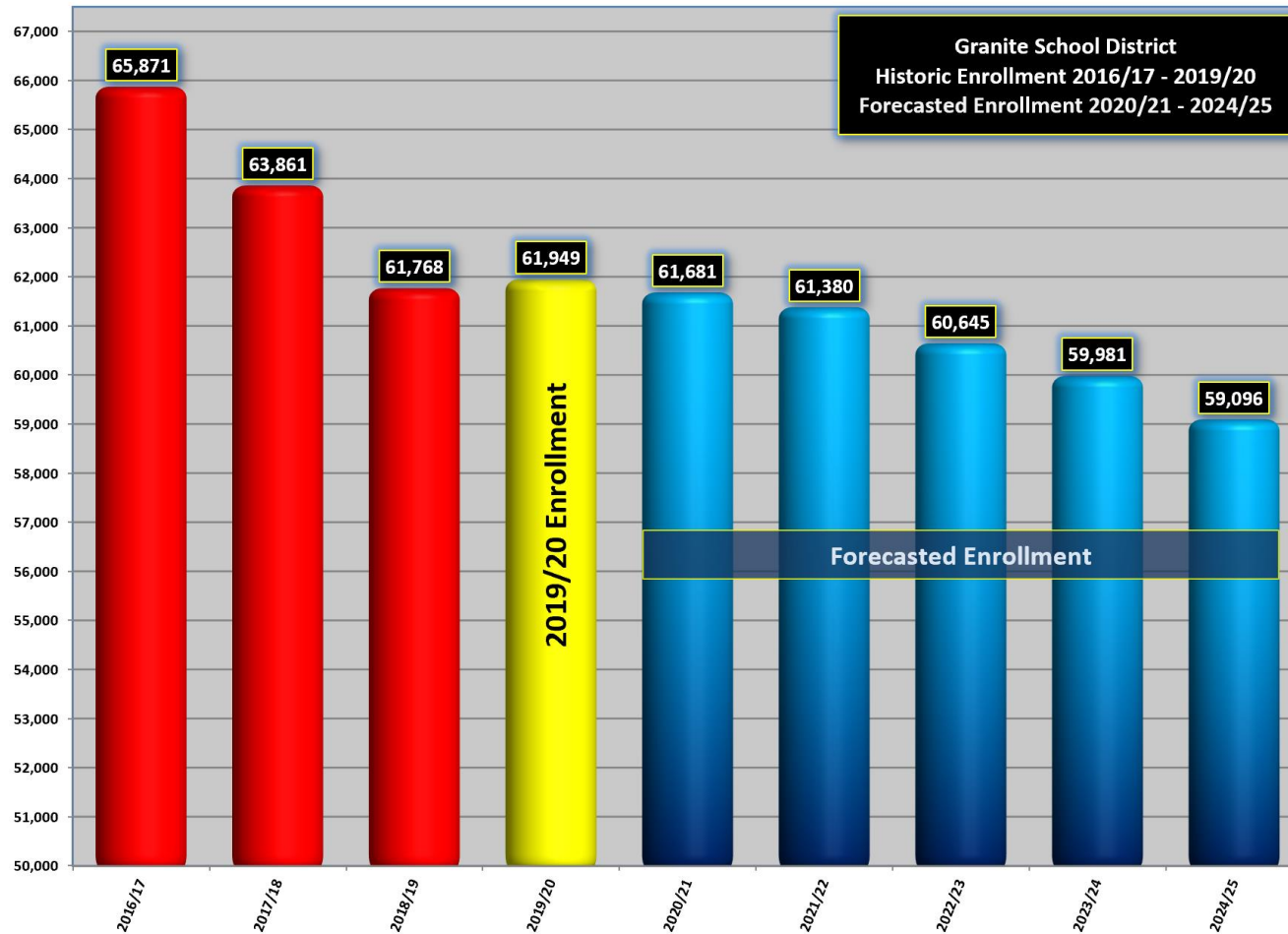
2016/17 - 2019/20 District Wide Mobility	
K --> G1	100%
G1 --> G2	99%
G2--> G3	98%
G3--> G4	97%
G4 --> G5	98%
G5 --> G6	99%
G6 --> G7	98%
G7 --> G8	98%
G8 --> G9	103%
G9 --> G10	99%
G10 --> G11	95%
G11--> G12	91%

Residential Development



Type	Total	Yearly Avg
SFD	1,476	295
MFA	2,418	484
APT	1,852	370
Total	5,745	1,149
K-12	Total	Yearly Avg
Students	1,656	331

5-Year Forecast



Next Steps ?

- PAC continues to consult with Davis Demographics to refine data
- In early 2021 Davis Demographics will present best thinking on what enrollment trends suggest regarding *potential* boundary and facility adjustments

Questions?

