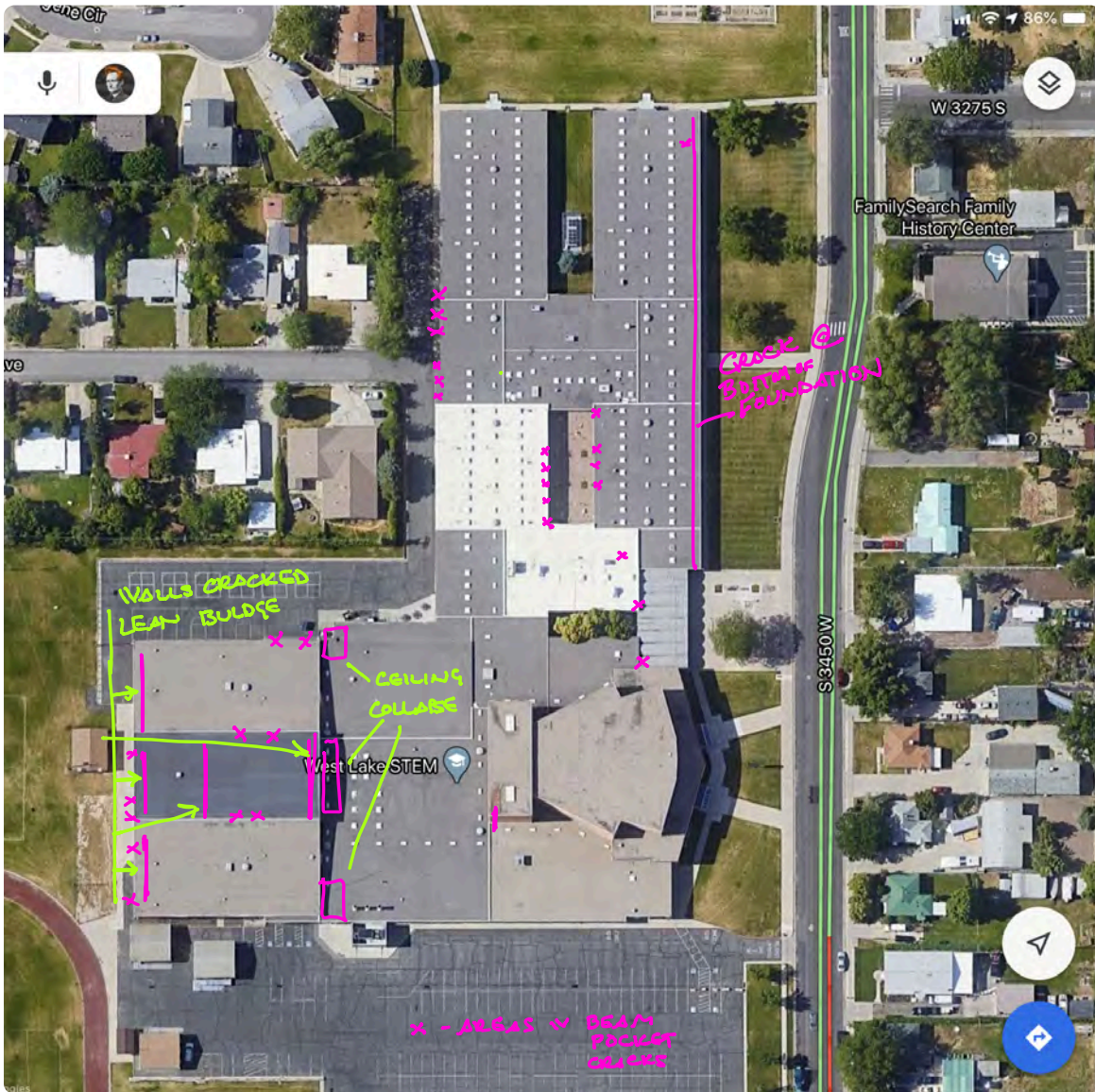


West Lake Walk through - March 18, 19 & 20, 2020



West Lake Jr. Synopsis

Building should remain closed.

Building may be extensive remodel or rebuild

Building shows stress cracks through out wall system

Ceiling collapsed due to beam rotation and un-reinforced block movement (all walls interior are similar construction and susceptible to such movement and shaking.

Perhaps 60% plus of interior walls show cracking.

Fly loft shows cracking interior and exterior

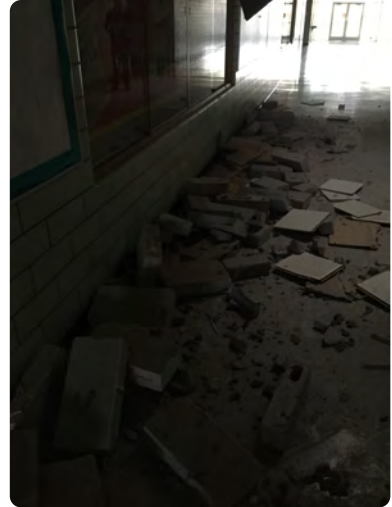
Crack at foundation wall join - east side B-hall from main entrance northward

It is the density of damage not necessarily the individual items (death by a thousand small cuts)

Work with state risk on replacement option

CEILING COLLAPSE

COLLAPSE IN CENTER (NORTH/SOUTH)
OF HALLWAY



COLLAPSE @ SOUTH END OF HALLWAY



COLLAPSE @ NORTH END OF HALLWAY





BLOCK BREAKING
& ROTATING NEAR
EXPANSION JOINT

STRESS
CRACKS IN FASCIA WALL
OVER STRUCTURAL COLUMN



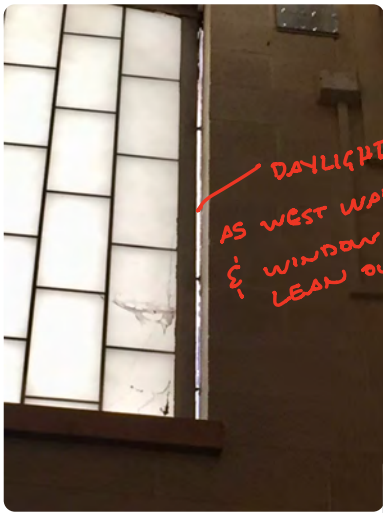
BREAKING & ROTATING
BLOCK



ONE INCH
MOVEMENT
@ EXPANSION
JOINT



BLOCK BREAKING
@ EXPANSION
JOINT

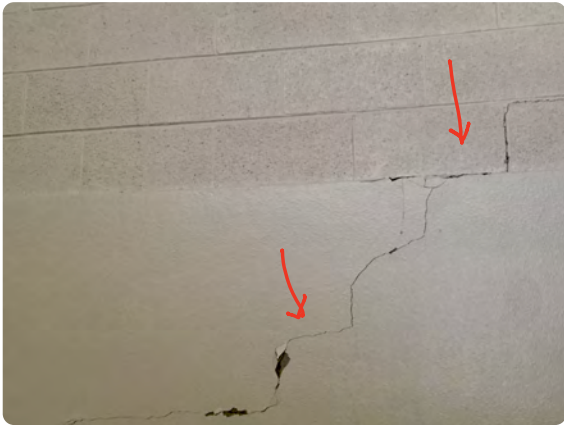




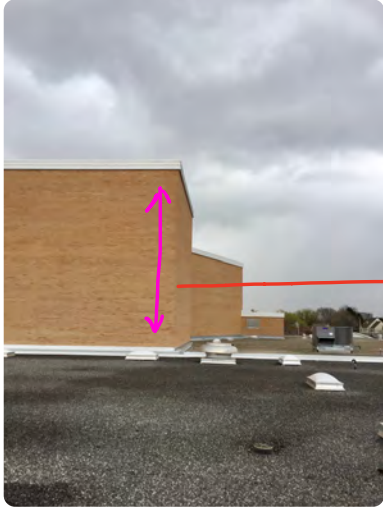
WALL STRESS/CRACKING @ COLUMN



STRESS CRACK (STAIRSTEP)



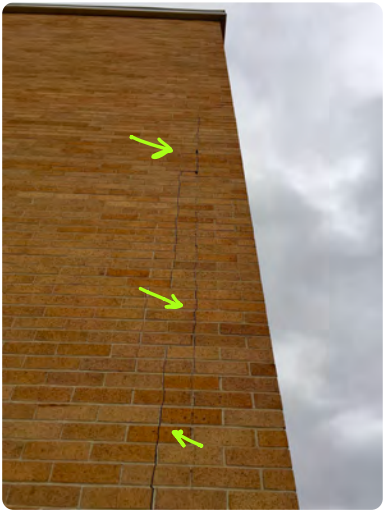
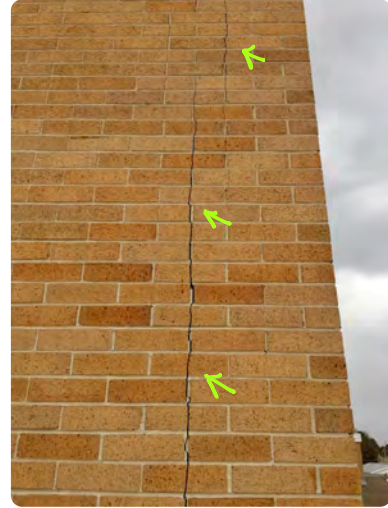
STAIR STEP CRACKS ON WALL DIVIDING MAIN GYM FROM DANCE ROOM/WRESTLING ROOM & EXERCISE ROOM.



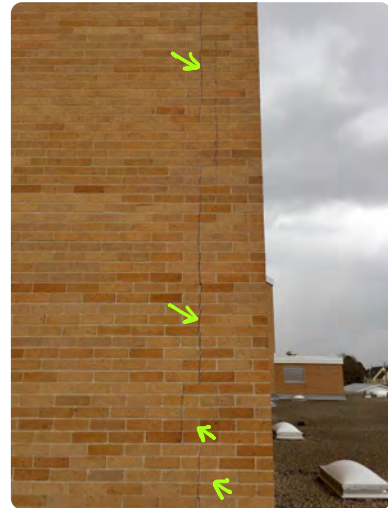
CRACKING @

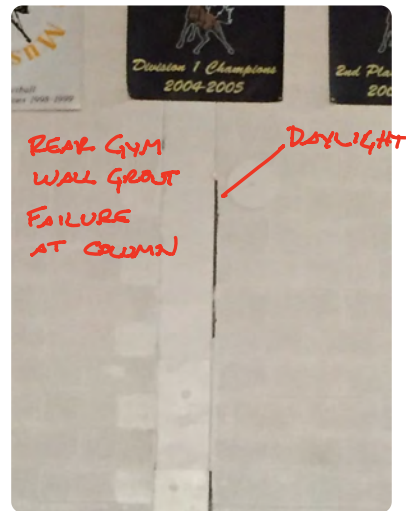
SW CORNER
OF FLY LOFT

CRACKS ALSO
ON INTERIOR
BLOCK



CRACKS APPEAR
TO EXTEND FROM
BOTTOM TO TOP OF
BOTH SW & NW
CORNERS OF FLY LOFT
SW CORNER IS
MORE SEVERE







ROOF CRACK

BEAM & POCKET SEPARATION

SOUTH WEST CORNER OF STERIUM



ROOF CRACK

WELD PLATE STEELS



STEM LABS SHOW COLUMN MOVEMENT



ROOF CRACK

BEAM MOVEMENT



WALL CRACK

KINETIC ENERGY



WALL CRACK

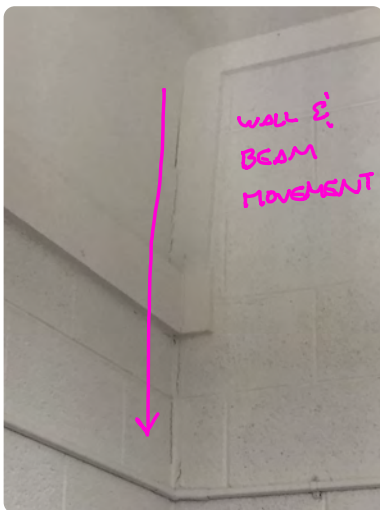
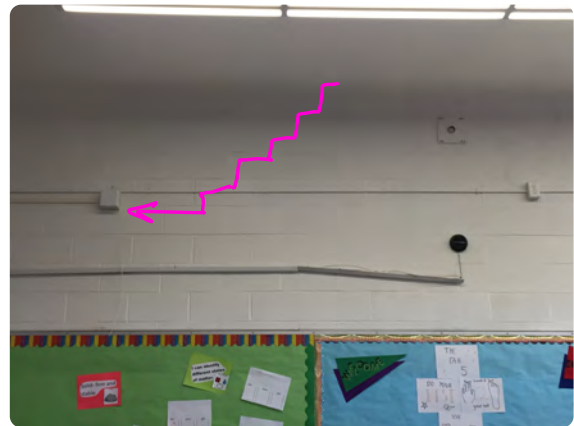
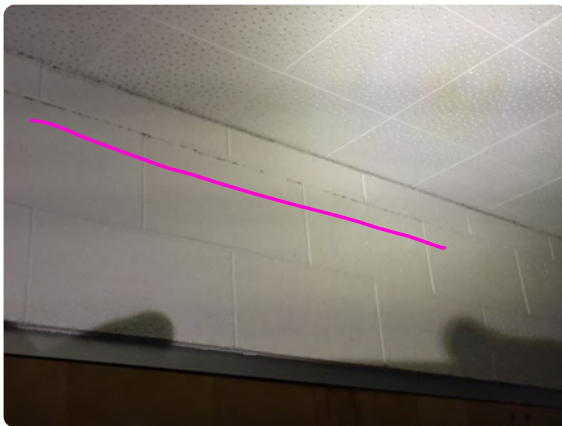
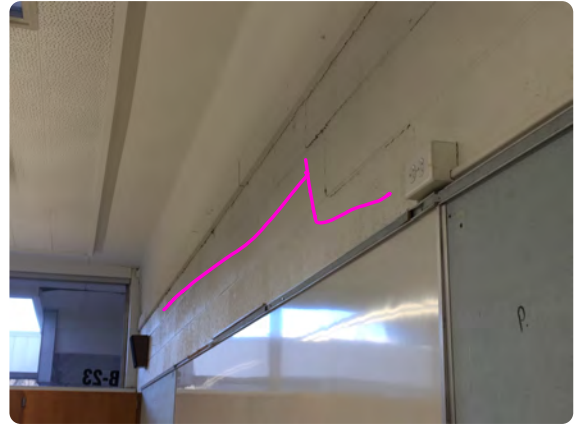
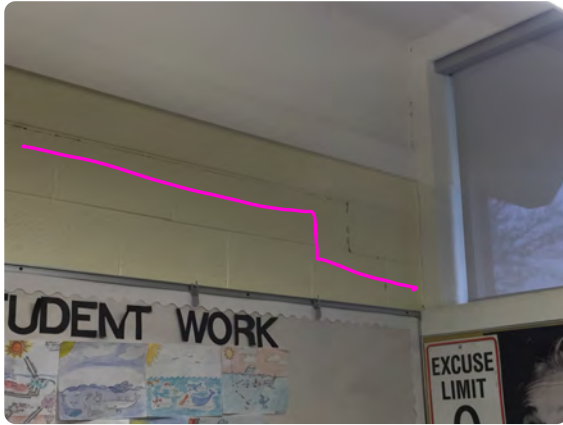
POTENTIAL ENERGY

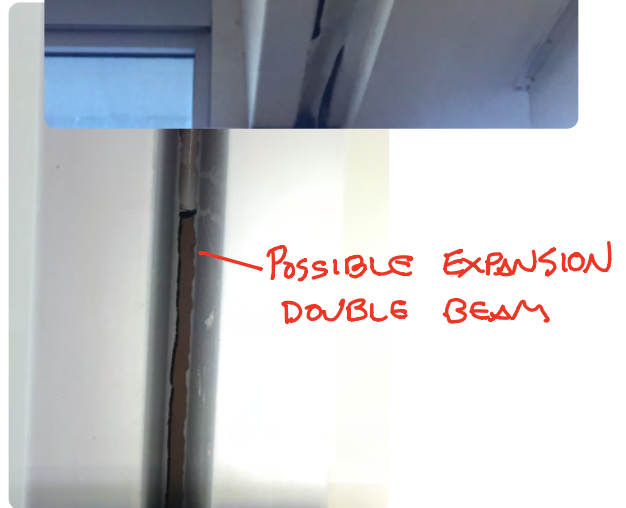
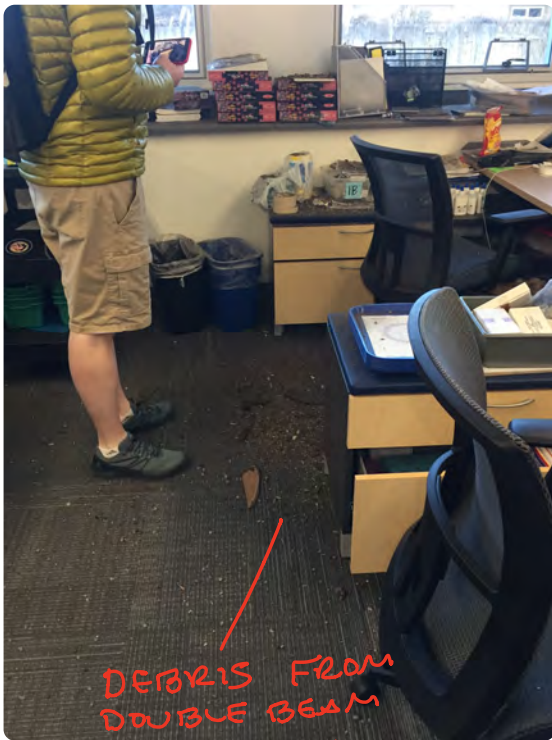
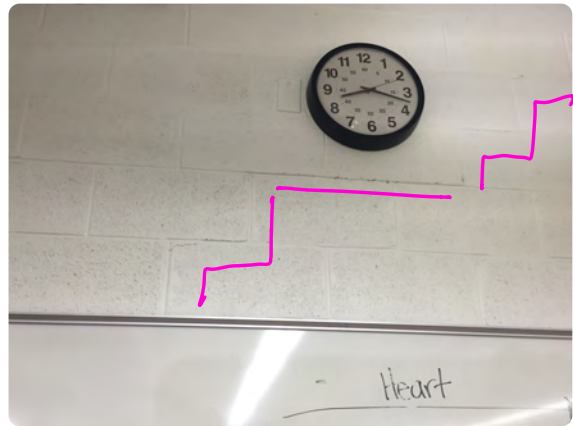
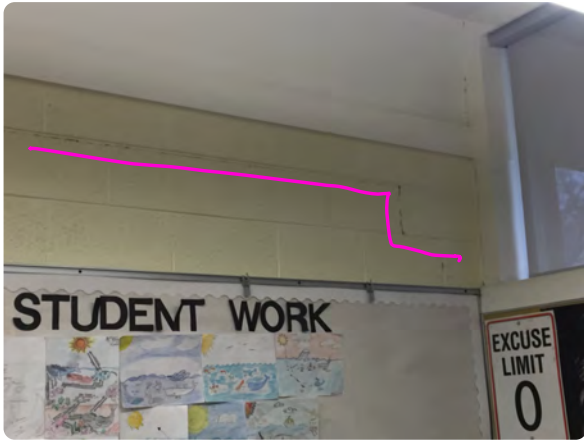


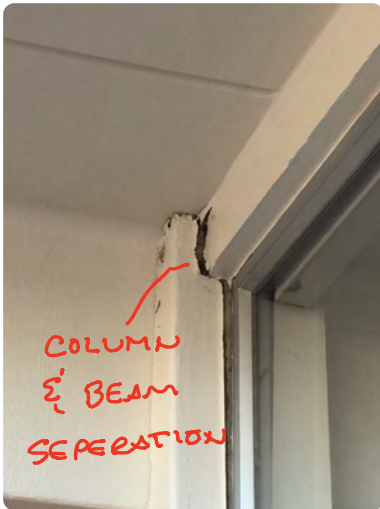
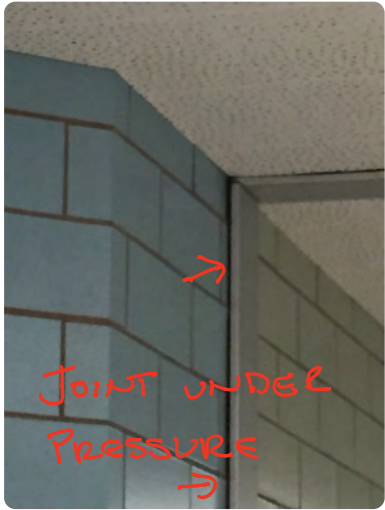
CLOSE UP OF WALL CRACK

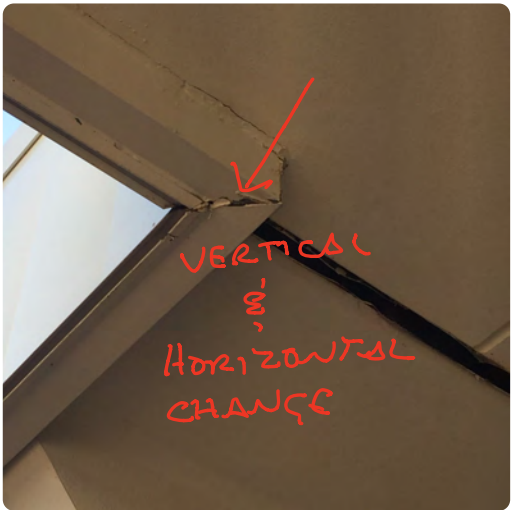
POTENTIAL ENERGY

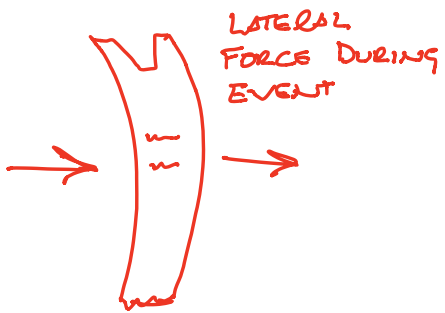
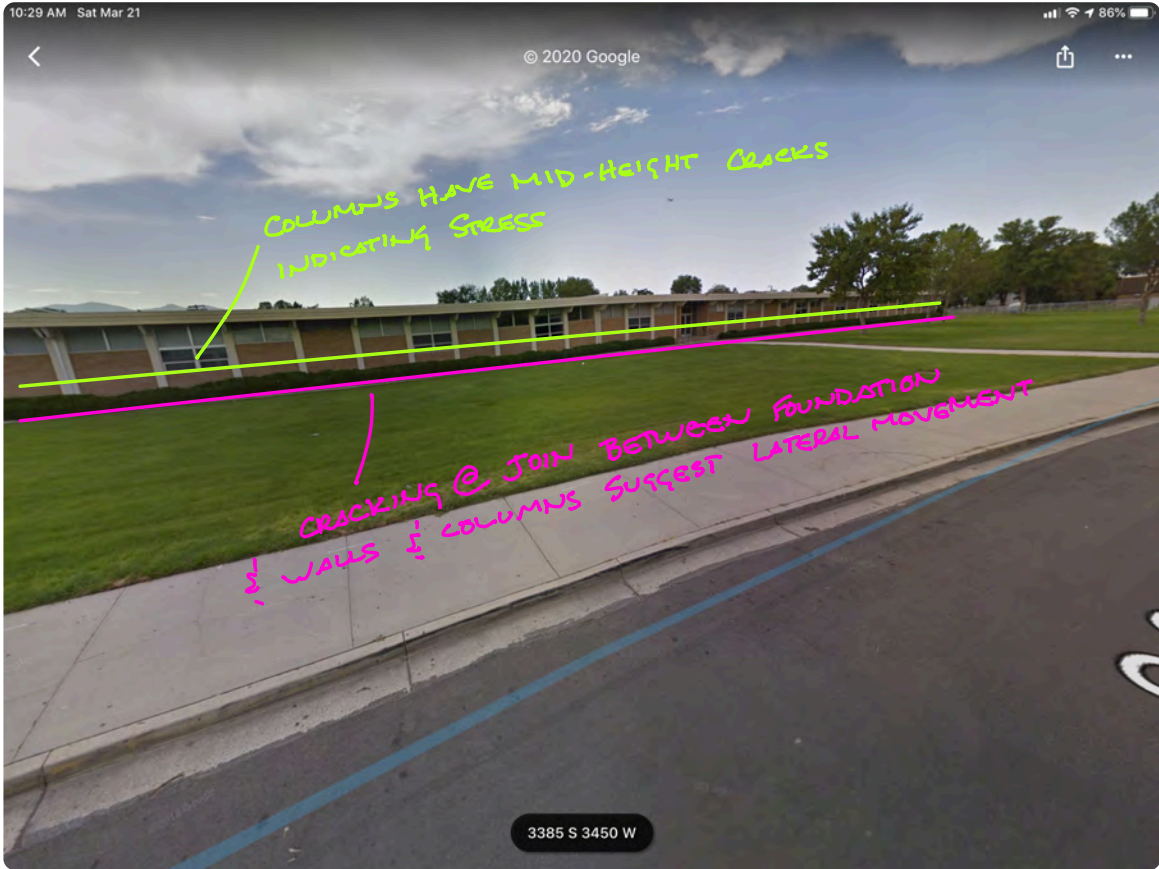
WALL CRACKS ON EAST WEST RUNNING INTERIOR WALLS
& ALSO ON INTERIOR CLASSROOM/HALLWAY DEMISING WALLS

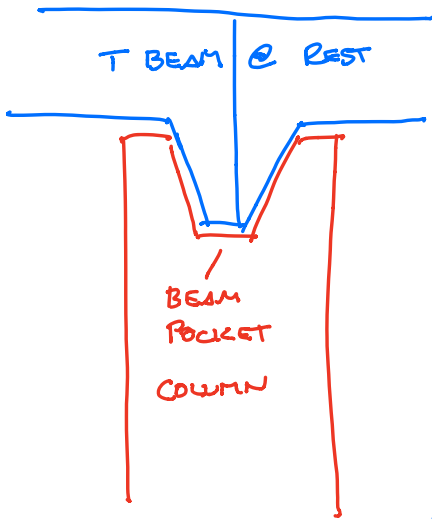




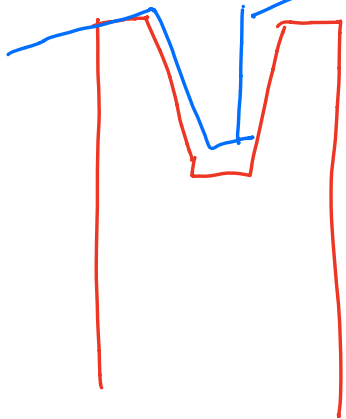








T-BEAM ROTATION CAUSING
CEILING COLLAPSE



T. MOVEMENT
CAUSES 4" BLOCK
TO COLLAPSE

CEILING IN COLLAPSE



CEILING

4" BLOCK

6" BLOCK

GLAZED
BLOCK



