

Population Analysis Study Process



Agenda

1. Policy Highlights
2. Process Review



Article VII.G.1.

Annual Student Population Analysis Procedures

A. Purpose

Based on its statutory responsibility and authority to do all things necessary for the maintenance, prosperity, and success of schools and for the promotion of education, the Board of Education establishes the following procedures in order to provide for the ongoing, systematic, and orderly review of student populations, school boundaries, and school facility issues....



C. Study List Development

1. The PAC shall prepare and recommend a study list to the Board in *February* of each year. The study list shall be developed based on Board recommendations and considering concerns and suggestions received from district employees, patrons, parents, community organizations, municipalities, governmental agencies, and other stakeholders.



D. Population, Boundary, and Facility Analysis

3. In conducting its study and in developing potential solutions, the PAC shall consider factors that include, but are not limited to the following:



..Continued

- a. Age and condition of buildings
- b. Busing and transportation needs
- c. Contiguous boundaries
- d. Efficiency of property use and disposition
- e. Enrollment and programming



..Continued

- f. Environmental factors (air quality, geological conditions, flood hazards, hazardous waste, etc.)
- g. Feeder patterns
- h. Fiscal considerations
- i. Natural disasters or other extraordinary circumstances (safety, potential for property damage, etc.)
- j. Protection of vulnerable or at-risk student populations
- k. Residential developments
- l. Safe walking routes



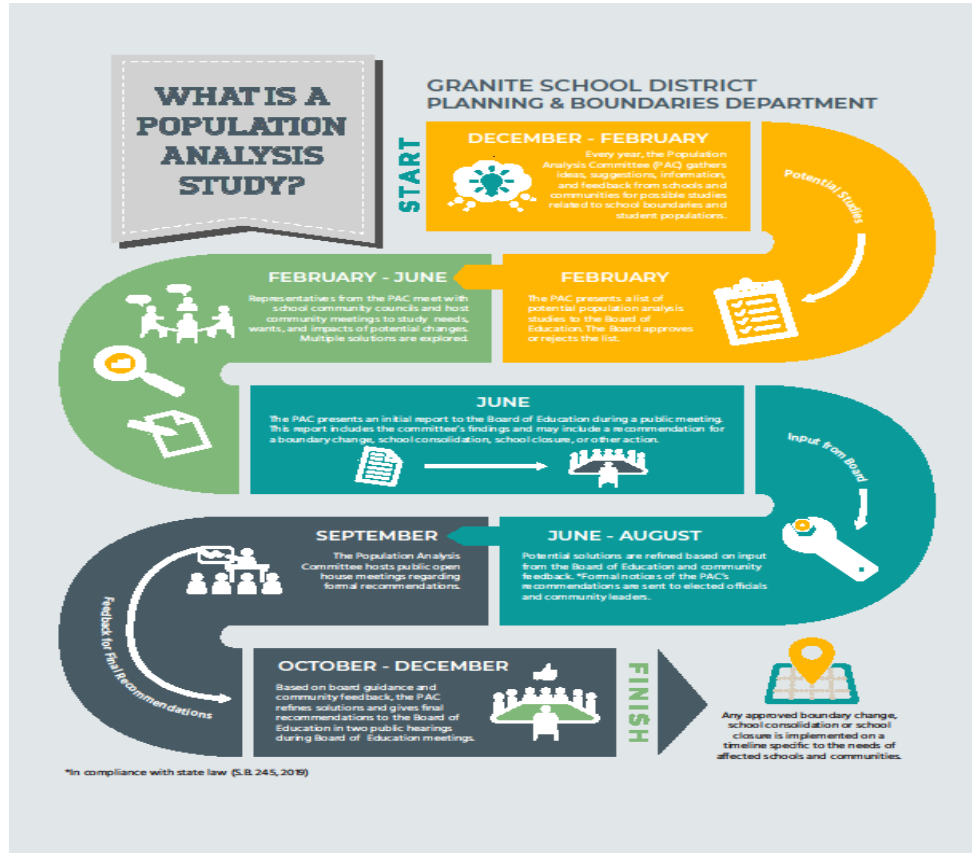
G. Implementation

1. Unless otherwise indicated by the Board, implementation of a final plan adopted by the Board shall be carried out at the beginning of the following school year.

2. Students whose boundary school changes as a result of implementation of the final plan shall be assigned to schools as follows:
 - a. Elementary and junior high students are expected to attend the new boundary school at the beginning of following school year. Students may apply through the open enrollment process if they wish to remain at the school they attended at the time the change was approved by the Board.



Title



Population Analysis Step 1

START

DECEMBER - FEBRUARY



Every year, the Population Analysis Committee (PAC) gathers ideas, suggestions, information, and feedback from schools and communities for possible studies related to school boundaries and student populations.

Potential Studies

FEBRUARY

The PAC presents a list of potential population analysis studies to the Board of Education. The Board approves or rejects the list.



Population Analysis Step 2

FEBRUARY - MAY

Representatives from the PAC meet with school community councils and host community meetings to study needs and the impacts of potential changes. Multiple solutions are explored.



Population Analysis Step 3

JUNE

The PAC presents an initial written report to the Board of Education. This report includes the PAC's findings and includes recommendations for potential solutions.

*The PAC will provide appropriate notice to the impacted communities.



Input from Board

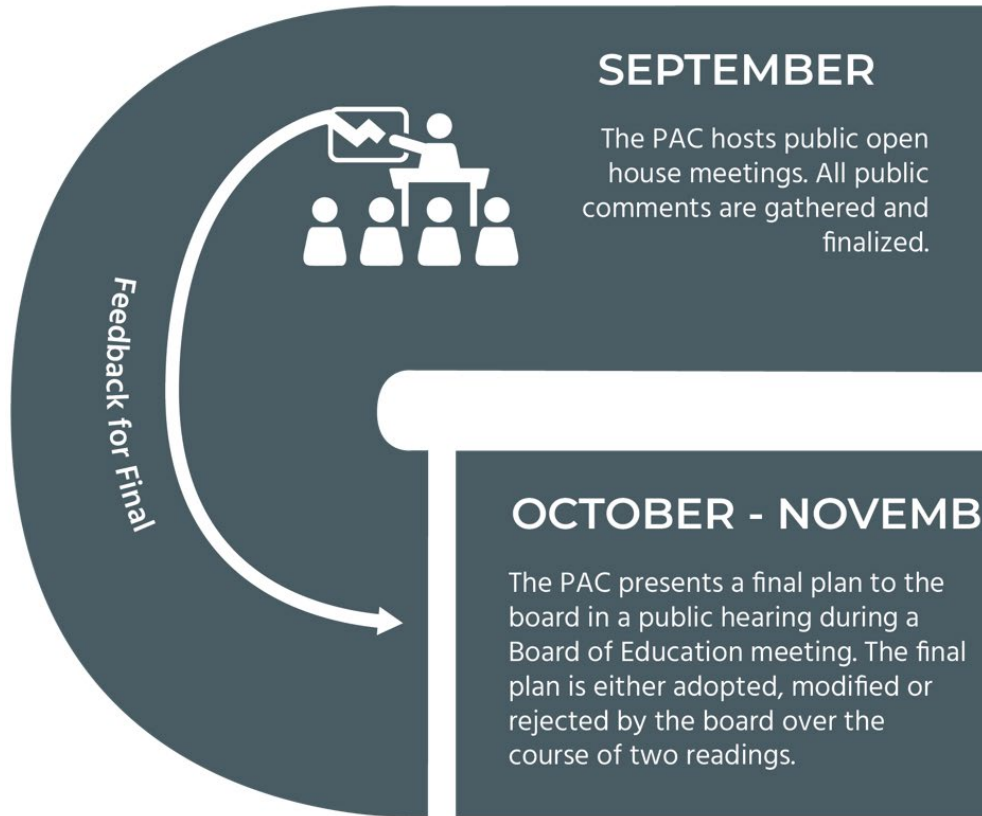


AUGUST

Potential solutions are refined based on input from the Board of Education. An initial report is publicized and public comment is solicited.



Population Analysis Step 4



FINISH



Population Analysis Step 5



Any approved boundary change, school consolidation or school closure is implemented on a timeline specific to the needs of affected schools and communities.



